



# User Guide

---

# COPYRIGHTS AND TRADEMARKS

LIVESCRIBE, ECHO, PULSE, and NEVER MISS A WORD are trademarks of Livescribe Inc. All other trademarks are properties of their respective owners. Copyright © 2007-2015. All rights reserved. <http://www.livescribe.com/>

**Important:** Read the End User License Agreement that comes with Livescribe products before using them. You accept the terms of the End User License Agreement by using any part of the product or software. Using any non-authorized charging accessories or ink cartridges may damage the smatpen and voids the smartpen warranty.

---

# CONTENTS

<b>About This Release.....</b>	<b>5</b>
<b>Getting Help .....</b>	<b>6</b>
Contacting Customer Service.....	7
Saving Data for Customer Service.....	7
Returning Livescribe Products.....	8
Items Purchased Directly from Liv escribe.....	8
Items Purchased from a Third Party.....	8
<b>Echo Desktop User Guide .....</b>	<b>9</b>
About Echo Desktop.....	10
Getting Started with Echo Desktop (Windows).....	11
System Requirements .....	11
Authorizing Echo Desktop .....	11
Uninstalling Echo Desktop .....	12
Upgrading Livescribe Desktop.....	12
Configuring Echo Desktop.....	12
Getting Started with Echo Desktop (Mac) .....	14
System Requirements .....	14
Authorizing Echo Desktop .....	14
Switching from Windows to Mac.....	15
Uninstalling Echo Desktop .....	15
Upgrading Echo Desktop.....	15
Configuring Echo Desktop.....	16
Viewing Notes and Playing Back Audio In Echo Desktop.....	18
Echo Desktop Basics.....	19
Running Echo Desktop.....	19
Echo Desktop Views.....	20
Pencast Keys and Controls .....	23
Viewing Notes.....	25
Viewing Pages.....	25
Viewing Pages Linked to an Audio Recording.....	25
Converting Handwritten Notes to Text.....	25
Copying and Pasting Pages to Other Apps .....	25
Searching Notes .....	26
Searching P ages.....	26
Playing Back Audio.....	28

---

Browsing Audio Recordings .....	28
Playing Audio Recordings in Audio View.....	28
Page Turning.....	29
Using Audio Controls.....	29
Scrubbing an Audio Recording.....	30
Renaming an Audio Recording in Echo Desktop .....	30
Printing.....	31
Printing a Single Page.....	31
Printing Your Own Notepads.....	31
Organizing Notes and Audio.....	33
Creating a Custom Notebook .....	33
Adding Custom Notebook Pages.....	33
Reorganizing Custom Notebook Pages.....	33
Deleting a Custom Notebook .....	34
Sharing Your Notes and Audio.....	35
Livescribe PDF .....	35
How to Share Notes and Audio.....	36
Importing Livescribe PDFs.....	36
Managing Storage for Echo Desktop and Your Smartpen.....	37
Freeing Space on Your Smartpen.....	37
Removing Audio from Your Smartpen.....	37
Deleting Audio from Echo Desktop.....	38
Removing a Smartpen from Echo Desktop.....	38
Maintaining Smartpen Content on Multiple Computers.....	39
Archiving Livescribe Notebooks on Windows.....	40
Archiving Livescribe Notebooks.....	40
Deleting Archived Notebooks from Echo Desktop.....	41
Deleting Archived Pages from Echo Desktop.....	41
Managing Your Smartpen.....	42
Registering Your Smartpen.....	42
Renaming a Smartpen.....	42
Removing a Paper Replay Password.....	42
Managing Smartpen Software and Apps.....	44
Installing Smartpen Software Updates.....	44

<b>Glossary.....</b>	<b>45</b>
----------------------	-----------

---

# ABOUT THIS RELEASE

This release of the Livescribe Platform includes new features and enhancements, corrected issues, and usability improvements.

Version numbers for this release are:

- Smartpen Firmware, Version 2.9.9 or later
- Echo Desktop for Windows, Version 3.0
- Echo Desktop for Mac, Version 3.0

---

# GETTING HELP

Livescribe provides several ways for you to learn more about the Livescribe Platform and get expert help when you need it.

On the Livescribe Support page, you can find several ways to get answers to any questions you might have about your smartpen or other Livescribe products.

To open the Livescribe Support page:

- From a web browser, go to [www.livescribe.com/support](http://www.livescribe.com/support), or
- Within Echo Desktop, go to the Help menu.

You can view release notes for all Livescribe products here: [www.livescribe.com/releasenotes](http://www.livescribe.com/releasenotes).

From the Livescribe Support site, you can search and browse the Livescribe Knowledge Base. There you can find answers to many of your questions. Livescribe updates the knowledge base frequently, so check it each time you need help.

---

## CONTACTING CUSTOMER SERVICE

If you cannot find the answers to your questions using the Support page, please contact Customer Service directly. You can reach Customer Service in the following ways:

- Go to [www.livescribe.com/support](http://www.livescribe.com/support), complete a Customer Service ticket and submit it.
- Email Customer Service at: [CS@livescribe.com](mailto:CS@livescribe.com)

## SAVING DATA FOR CUSTOMER SERVICE

If you are experiencing problems with an Echo Desktop product, you should gather data from your installation for Customer Service.

1. In Echo Desktop for Windows, choose **Help > Save Data for Customer Service**. In Echo Desktop for Mac, hold the keyboard Control key down and go to **Tools > Customer Support > Gather Debug Logs**
2. Save the data to your computer so you can send it to Customer Service if requested.

---

## RETURNING LIVESCRIBE PRODUCTS

If you need to return the Livescribe smartpen or other Livescribe product, follow the instructions below.

### ITEMS PURCHASED DIRECTLY FROM LIVESCRIBE

Items purchased directly from Livescribe have the following return time-frame to qualify for a refund. Items returned after this timeframe are not accepted or credited:

- Hardware: 30 days.
- Accessories: 30 days

Livescribe refunds the full amount paid minus shipping on any item(s) returned within the allowable time. The customer must contact Customer Service for a Returned Material Authorization (RMA) number and is responsible for the original shipping and the return shipping fees.

A returned item must be returned in like-new condition with all the original components and packaging. Credits are issued once the item(s) have been received and verified.

### ITEMS PURCHASED FROM A THIRD PARTY

If you discover what you believe is a software or product defect for any third-party item, please contact the manufacturer of such third-party item directly for information regarding that manufacturer's warranty. Products sold through the Livescribe website that do not bear the Livescribe brand name are serviced and supported exclusively by their manufacturers in accordance with the terms and conditions packaged with the products. Third-party software or products are not covered by Livescribe's Limited Warranty.



# Echo Desktop User Guide

## ABOUT ECHO DESKTOP

Echo Desktop is software that runs on your computer to view and listen to the content you create and capture using your Smartpen. With Echo Desktop, you can view your notes, listen to your recorded audio, and more.

Using Echo Desktop, you can:

- Save and search notes, and play back audio recordings and pencasts from your computer.
- Search your handwritten notes.
- Organize and manage your notes.
- Export and share your notes and audio recordings.

## GETTING STARTED WITH ECHO DESKTOP (WINDOWS)

If this is the first time you are installing Echo Desktop, follow these steps.

1. Verify that your computer meets the software and hardware requirements for Echo Desktop.
2. Download the Echo Desktop installer from [www.livescribe.com/install](http://www.livescribe.com/install).
3. Open the installer and follow the on-screen instructions to complete the installation. When asked to dock your smartpen, use only the Micro-USB cable that came with your smartpen.

**Note:** Pulse smartpen owners should use only the USB mobile charging cradle included with the product. Plug the cradle's USB connector into an available USB port on your computer. Put the Pulse smartpen gently into the cradle. A built-in magnet will snap the smartpen snugly into place.

### SYSTEM REQUIREMENTS

You can install Echo Desktop on one or more computers. Before installing, verify that your computer meets or exceeds the system requirements.

Echo Desktop requires:

- Windows® 7, Windows® 8, or later
- 300 MB of available disk space
- An available USB 2.0 port
- Internet connection

### AUTHORIZING ECHO DESKTOP

As a Livescribe user, all your Livescribe tools link to each other using one set of credentials. This means that your smartpen registration and your installations of Echo Desktop identify themselves to each other using the *same email address and password*.

When you use Echo Desktop for the first time, Echo Desktop prompts you to log on to or create your Livescribe account. After doing so, that installation of Echo Desktop is authorized for (or linked to) your account.

You can use Echo Desktop on as many computers as you like, and you can use as many smartpens as you like with them. When authorizing Echo Desktop and registering your smartpens, use the same email address and password for all of them.

## UNINSTALLING ECHO DESKTOP

You can uninstall Echo Desktop from your computer.

1. In the Control Panel, locate and double-click on **Add or Remove Programs**.  
The Echo Desktop installer prompts you to confirm the removal of the app.
2. Click **Yes** to proceed.
3. Follow the on-screen instructions to complete the uninstall process.

## UPGRADING LIVESCRIBE DESKTOP

If you are already using the earlier desktop software, Livescribe Desktop, you may continue using it. Livescribe Desktop will not receive any further development or updates.

At any time, you can download Echo Desktop from [www.livescribe.com/install](http://www.livescribe.com/install) and install it.

**Important:** Note that installing Echo Desktop will uninstall Livescribe Desktop, but as with all Livescribe updates, your data will transfer to your updated software and remain intact.

## CONFIGURING ECHO DESKTOP

You can customize the behavior of Echo Desktop using its configuration options.

### SETTING UP AUTOLAUNCH

You can configure Echo Desktop to automatically launch when you dock a smartpen. This feature is called **Autolaunch**.

- Check the **Autolaunch** option in the **app** tab under **Tools > User Settings**.

If you disable autolaunch, docking your smartpen charges it only. It does not launch Echo Desktop or transfer the smartpen content.

### CONFIGURING ECHO DESKTOP SETTINGS

With the User Settings feature, you can set your preferences for Echo Desktop app, the interaction of Echo Desktop with the smartpen, and how you want to show pages in Echo Desktop.

To set user preferences:

1. Go to **Tools > User Settings**
2. Navigate through the tabs to set your preferences as described below.

### APP SETTINGS

Use the **Applications** tab to set preferences for the Echo Desktop app. Options include:

- Keeping you logged in to Livescribe Online when you launch Echo Desktop.
- Specifying settings if your network uses a proxy server. Contact your system administrator for information about what settings to use.
- Disabling the Echo Desktop startup sound.

### SMARTPEN SETTINGS

Use the Smartpen tab to set preferences for your smartpen. Options include:

- Automatically installing updates to your smartpens instead of manually selecting which to install and where.
- Enabling Echo Desktop to show the library for a particular smartpen by default on startup.

### PAGES SETTINGS

Use the Pages tab to set preferences for how to show pages in Echo Desktop. Options include:

- Hiding blank (empty) pages when viewing thumbnails.
- Choosing screen colors for active ink (ink that has linked audio), inactive ink (ink without audio), and ink added during audio playback (ink annotations).

## GETTING STARTED WITH ECHO DESKTOP (MAC)

You can install Echo Desktop on one or more computers.

### SYSTEM REQUIREMENTS

Before installing Echo Desktop ensure your computer meets or exceeds the system requirements.

Echo Desktop requires:

- Intel-based Mac with Mac OS® X 10.8.5, and above
- 300 MB of free disk space
- USB 2.0 port
- Internet connection for software download

### INSTALLING ECHO DESKTOP FOR THE FIRST TIME

If this is the first time you are installing Echo Desktop, follow these steps:

1. Verify that your computer meets the software and hardware requirements for Echo.
2. Download the Echo Desktop installer from [www.livescribe.com/install](http://www.livescribe.com/install).
3. Launch Echo Desktop.
4. Dock your smartpen. This copies content from your smartpen to Echo Desktop.
5. When prompted, register your smartpen. If you already have an account, use the same log in credentials. Otherwise, create a new account.

### AUTHORIZING ECHO DESKTOP

As a Livescribe user, all your Livescribe tools link to each other using the same email address and password. This means that your smartpen registration, your Livescribe Online account, and your installations of Echo Desktop, all identify themselves to each other using the *same email address and password*.

When you use Echo Desktop on a computer for the first time, Echo Desktop prompts you to authorize it. Log into your Livescribe Online account and Echo Desktop is authorized for (or linked to) your account.

You can use Echo Desktop on as many computers as you like, and you can use as many smartpens as you like. Just ensure that when you authorize Echo Desktop

and register your smartpens, you use the same email address and password as your Livescribe Online account.

### SWITCHING FROM WINDOWS TO MAC

If you have been using your Echo Desktop for Windows, and you want to switch to Echo Desktop for Mac, dock your smartpen to your Macintosh after installing Echo Desktop. This automatically copies your content.

To switch to Echo Desktop for Mac from Windows:

1. Install and launch Echo Desktop on your Macintosh. Follow the steps in .
2. When prompted, register your smartpen using your existing Livescribe account.
3. Dock your smartpen. This copies content from your smartpen to Echo Desktop

You may want to dock your smartpen overnight if it has a large amount of data on it, as it may take an hour or so to transfer the data the first time you dock.

If you had archived notebooks in Echo Desktop for Windows, the archived content is no longer on your smartpen. Therefore, simply docking your smartpen does not transfer the archived content. The archived content only resides in your My Livescribe folder on your Windows PC, where you can view it as needed.

### UNINSTALLING ECHO DESKTOP

If you need to delete the Echo Desktop app from your computer, use one of the procedures below.

- Go to the folder where you installed Echo Desktop and drag `livescribe.app` to the **Trash**.
- Select `livescribe.app` and press `+ Delete`.

Echo Desktop stores some large files in the `Library > App Support > Livescribe` folder. Manually delete these files.

### UPGRADING ECHO DESKTOP

If you have an older version of Echo Desktop running on your computer, follow the steps below to upgrade it.

## CHECKING FOR ECHO DESKTOP UPDATES

If you are connected to the Internet, Echo Desktop automatically checks the Livescribe website to see if your version of Echo Desktop is current, and if the software and firmware on your smartpen are up to date.

If your system needs updates, Echo Desktop prompts you to update now or later. It is good practice to accept the updates available for both Echo Desktop and your Livescribe smartpen.

If you are currently using any version earlier than 2.7 of Echo Desktop for Mac OS X, perform these steps to upgrade:

1. Launch Echo Desktop. If an update is available, Echo Desktop prompts you to accept the update. Confirming the update downloads the latest version of Echo Desktop for Mac OS X from the Livescribe website.
2. Check for additional updates. Choose **Echo Desktop > Check for Updates** from the Menu. Accept any updates offered. Repeat this process until you have installed the current version of Echo Desktop. To determine the current version numbers, see [About This Release](#) on page 5.

## CONFIGURING ECHO DESKTOP

You can customize the behavior of Echo Desktop using its configuration options.

### SETTING ECHO DESKTOP PREFERENCES

Echo Desktop gives you control over how the app looks and responds, as well as access to updates. To set your Echo Desktop preferences:


1. From the **Echo Desktop** menu, select **Preferences**. The Preferences dialog opens with the General options available. Note the names of the Preferences sections at the top of the dialog. You can reset the preferences to the Echo Desktop factory settings at any time by pressing the **Factory Settings** button available on each preference dialog.
2. In the **General** section, choose if you would like to automatically launch Echo Desktop when you dock a smartpen. Also choose if you want to auto-install software updates.
3. In the **Paper** section, choose the default ink color and the color for active and animated ink. You can also choose to show or hide blank pages and draw or hide page background images (ruled lines and so on).
4. In the **Audio** section, set the playback latency (in seconds). This setting rewinds your audio playback up to ten seconds from when your writing occurred. This compensates for written notes that lag behind the recorded audio, which occurs as you write notes about something shortly after hearing it. The lag varies depending on your note-taking style.



5. In the **Software Update** section, specify how Echo Desktop checks for updates of software and firmware.

## VIEWING NOTES AND PLAYING BACK AUDIO IN ECHO DESKTOP

In Echo Desktop, you can view your notes and play back audio recordings made with the smartpen. In Echo Desktop, notes that have linked audio appear as green ink.

To listen to audio recordings that are linked to your notes, click on the green ink with your mouse. Clicking green ink in Echo Desktop is similar to tapping a note in our paper notebook. Both actions begin audio playback. When you mouse over green ink, the mouse cursor changes to a pointing hand . Click to play back the associated audio.

**Note:** You can change the color of clickable ink in the preferences panel.

## ECHO DESKTOP BASICS

Echo Desktop provides views, menus, toolbars, and controls you can use to view and manage notes and audio transferred from your smartpen.

### RUNNING ECHO DESKTOP

To run Echo Desktop and transfer notes and audio from your smartpen, follow these steps.

Use only the connector that came with your product: the Micro-USB cable for Echo smartpens or the USB Mobile charging cradle for Pulse smartpens.

**Note:** After docking your smartpen, do not remove it until content transfer is complete. Echo Desktop shows a message confirming that the transfer is successful and you may now undock the smartpen.

**Important:** Be sure that your computer does not go into sleep mode during the transfer process. If it does, undock and redock your smartpen so transfer can restart.

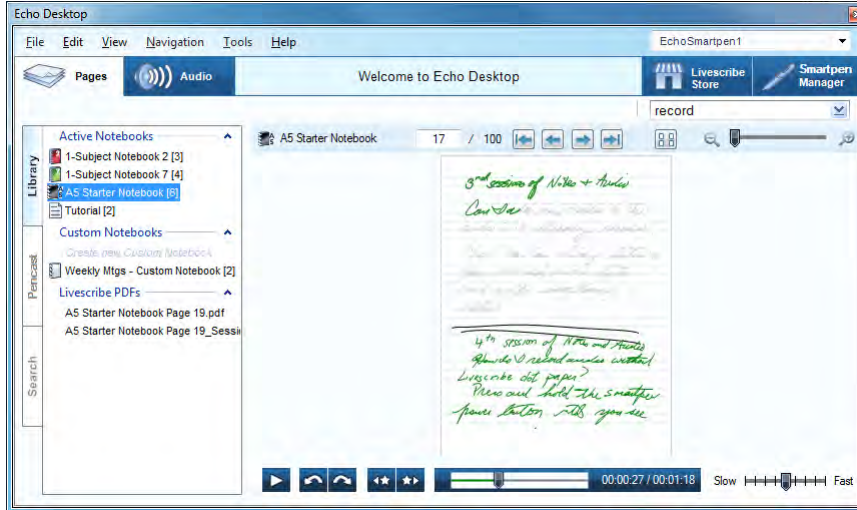
1. Launch Echo Desktop.
2. Dock your smartpen.  
If your smartpen is authorized for the computer you are using, data transfer begins automatically.
3. Do not undock your smartpen until the transfer is complete. Echo Desktop shows a message confirming transfer success.
4. If prompted, type a name for your smartpen. This is the name that displays in Echo Desktop to identify your smartpen. This name also displays on your smartpen when you power it on.
5. If you have not registered your smartpen, Echo Desktop prompts you to do so.
6. The smartpen selector in the Navigation Pane allows you to choose which smartpen content to view in Echo Desktop.

Echo Desktop shows the Library of notebooks and other paper products that you have used with the selected smartpen, including your notes and any audio you have recorded. Echo Desktop can also show details about the selected smartpen, including its battery and storage usage.

When you transfer content to Echo Desktop, the original content remains on the smartpen. In this sense, *transferring* content actually means copying it from the smartpen to Echo Desktop.

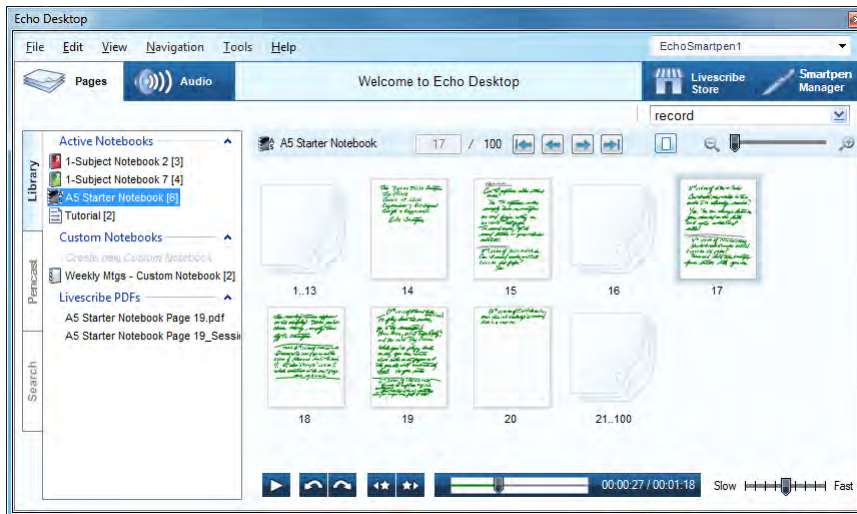
## ECHO DESKTOP VIEWS

Echo Desktop has the following views and panes. Echo Desktop for Windows screenshots are shown below.



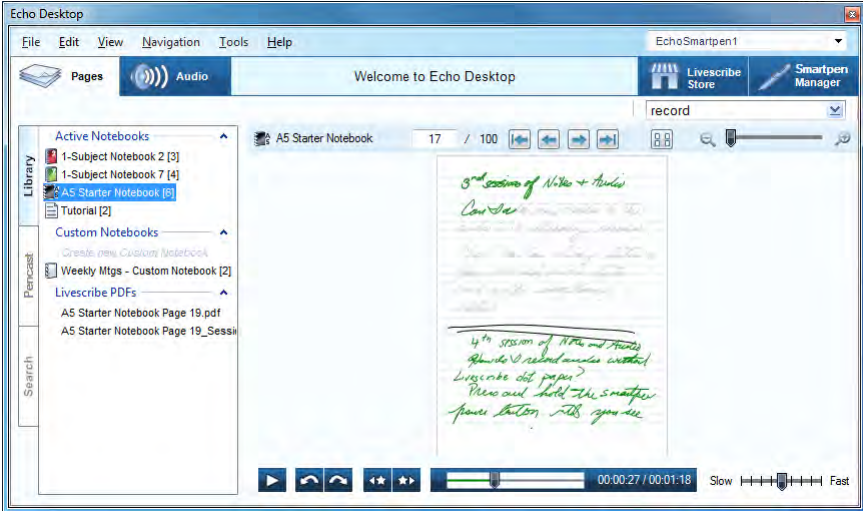
### Pages View

Pages View is the default Echo Desktop view. Echo Desktop shows Livescribe notebook pages as thumbnails.



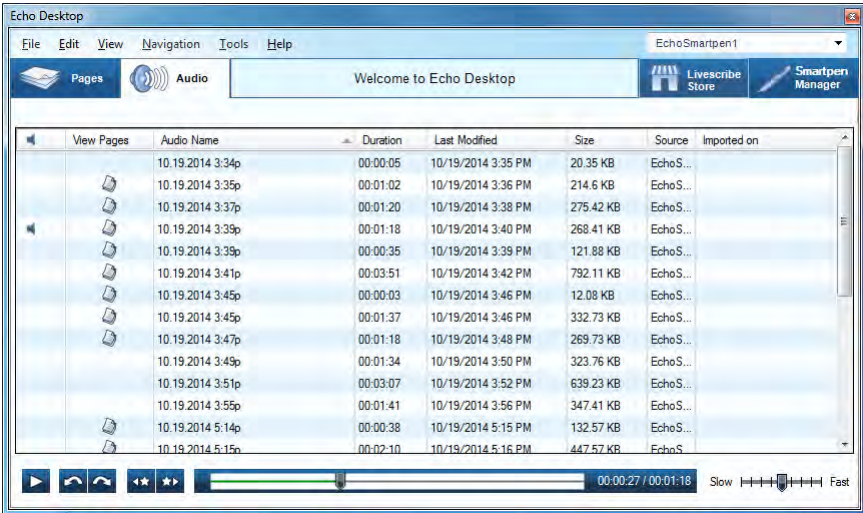
### Single-Page View

Single-Page View shows individual pages. Click on green ink to play back audio recordings linked to the page.



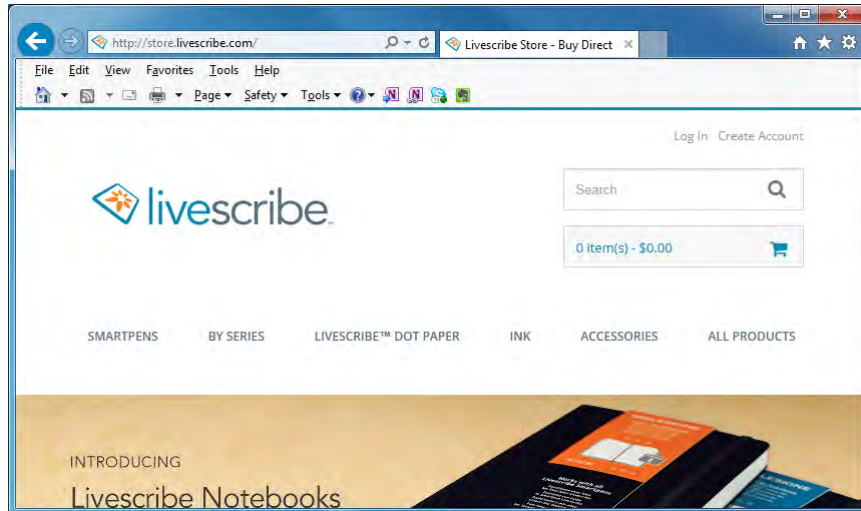
### Audio View

In Audio View, you can view a list of your audio recordings. In this view, you can also play back recorded audio, and share.



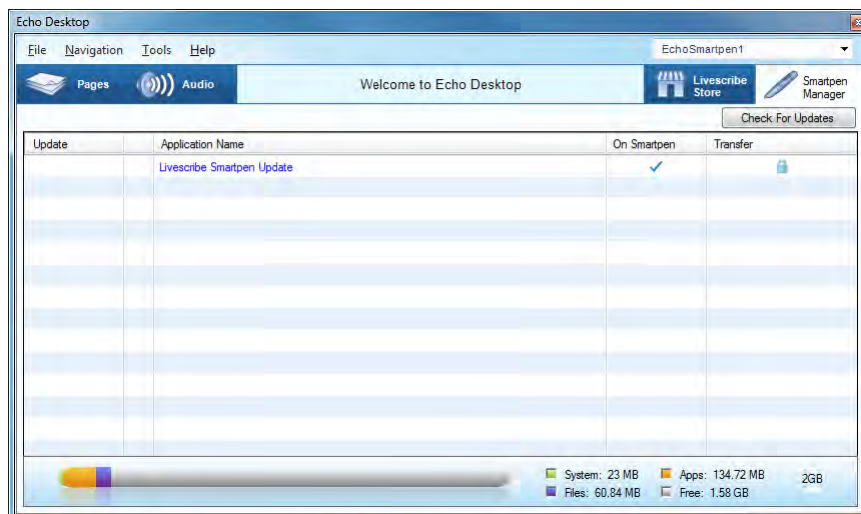
### Livescribe Store

Clicking the Livescribe Store tab launches your web browser to the Livescribe store, where you can order new notebooks, ink refills, and the like.



### Smartpen Manager

The Smartpen Manager is for viewing, installing, and uninstalling smartpen software.



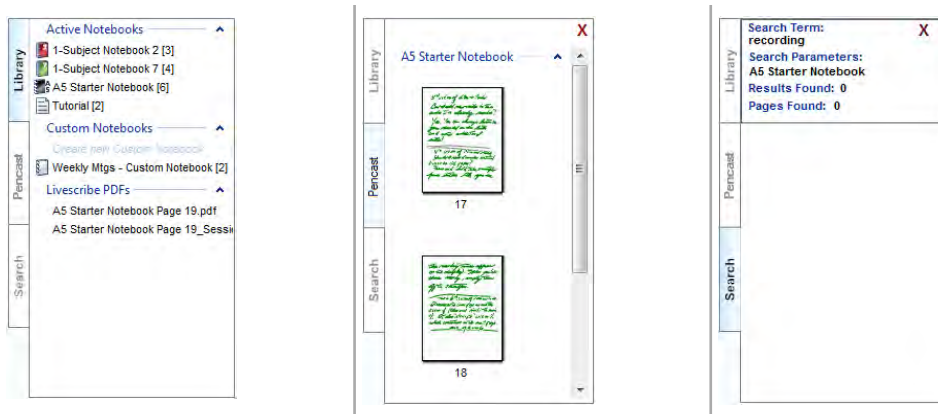
### Viewing Pane

The Viewing Pane is the central area where you view and interact with your notes. For example, this pane is where you view your notes.

## Navigation Pane

Echo Desktop provides a Navigation Pane on the left side of the Viewing Pane. The Navigation Pane lists items that you can navigate to or view in more detail in the Viewing Pane. For example, clicking one of the notebooks in the Navigation Pane opens the notebook and shows all its pages in the Viewing Pane.

Using the Navigation Pane, you can view your library of notebooks and view pages that contain search results. The Navigation Pane uses tabs to organize its content.



## Library Tab

This tab shows your entire library of notebooks, journals, custom notebooks, and any Livescribe PDFs you've opened in Echo Desktop. Use the Library tab to select what you want to view in the Central Viewing Pane.

## Pencast Tab

This tab shows all pages of the pencast currently playing. This tab appears in the Navigation Pane when you play back a pencast.

## Search Tab

This tab shows the pages found using the Search feature. This tab shows the search results highlighted in yellow. The Search tab remains open until you close it.

## PENCAST KEYS AND CONTROLS

Echo Desktop has menus, toolbars, and controls for viewing and managing pencasts created by your smartpen.

### LIVESCRIBE NOTEBOOK CONTROLS

**Livescribe Notebook Controls** are for paging through notebooks, zooming pages, and toggling between Single-Page and Thumbnail Views.



### LIVESCRIBE PDF CONTROLS

**Livescribe PDF Controls** are located at the bottom of the Echo Desktop screen. This toolbar is for controlling playback of recorded audio.



### MEMORY BAR

The **Memory Bar** in Smartpen Manager shows the storage state of your smartpen.






## VIEWING NOTES

With Echo Desktop, you can view notes transferred from your smartpen.

### VIEWING PAGES

In **Pages View**, you can see all your pages at once as thumbnails. You can open them to full size. You can click on green active ink to hear the audio captured with your notes.


Click back to the single page button  to view the selected thumbnail as a single page, enlarged to fit the Viewing Pane.

Use Control-click to select multiple, non-sequential thumbnails.

Use Shift-click to select a sequential set of thumbnails.

### VIEWING PAGES LINKED TO AN AUDIO RECORDING

From Audio View, you can view the pages that have linked audio.

- Click the **View Page** button  next to the audio recording you want to view.
- Choose the audio recording from the list and choose **File > View Pages** in the Menu.

Either of these actions switches your view to Pages View and open the Sessions tab of the Navigation Pane, showing all pages in this audio recording. The first page of the audio recording shows in the Central Viewing Pane and the audio recording plays back.

### CONVERTING HANDWRITTEN NOTES TO TEXT

You can use MyScript® for Livescribe to convert your handwritten notes to digital text. MyScript for Livescribe is a desktop app from MyScript® that is sold separately. Visit [www.livescribe.com/store](http://www.livescribe.com/store) or [www.visionobjects.com](http://www.visionobjects.com).

After you purchase and install MyScript for Livescribe, the **MyScript** button will appear in the Echo Desktop menu bar. Make a selection of pages and then click the MyScript button. Your selected pages will be exported to the MyScript application.

### COPYING AND PASTING PAGES TO OTHER APPS

The **Copy** menu enables you to copy an image of a selected page so that it can be pasted into another application.

## SEARCHING NOTES

With Echo Desktop, you can search notes transferred from your smartpen.

### SEARCHING PAGES

You can search notes written in cursive, print, or a combination. Your search text can be part of a word, a whole word, or consecutive words.

### SEARCH FOR A WHOLE WORD

1. Type search text into the search text box  in the Main Toolbar.

By default, this search method finds whole words in the currently-selected notebook or journal. For example, entering “top” would find instances of “top” only. Search would not find other words that contain the letters “top”, like “topographic”, and “mountaintop”. Search is not case sensitive, so if you search for “Top”, it returns the same results as “top” and “TOP”.

2. Press the **Enter** key to initiate the search.

### SEARCH FOR PART OF A WORD

1. Click the **Search** button  in the search text box.

Echo Desktop shows the advanced search dialog:

2. Type the search text into the Search dialog. By default, this search method finds whole words in the current notebook or journal.

To search for partial words, uncheck the **Match Whole Word** checkbox. For partial word searches, entering “top” would find “top” and other words that contain the search string like “topographic”, and “mountaintop”. Because Search is not case sensitive, “Top”, “top”, and “TOP” return the same results.

### SEARCH ONE, SELECTED, OR ALL NOTEBOOKS

1. Choose which notebooks to search the currently-open notebook, all notebooks or selected notebooks that you have checked.
2. Click **Search** to initiate the search.

### VIEWING SEARCH RESULTS

When you perform a search in the current notebook or journal, Echo Desktop searches through all its pages.

When Search finds one or more hits (text matches), it shows the results in the Search tab in the Navigation Pane. Echo Desktop shows thumbnails of the pages where it found the search text. The results remain within the Search tab until you either initiate another search or close the tab. The Search tab holds one set of search results at a time.

To view one of the search result pages, click on its thumbnail in the Search tab. This opens the page in Single-Page View in the Viewing Pane with the search hits highlighted yellow.

## PLAYING BACK AUDIO

With Echo Desktop, you can play back audio transferred from your smartpen.



### BROWSING AUDIO RECORDINGS

To view a list of all audio recordings:

- Click the **Audio** button ( *Win* ) or **Pencasts** button ( *Mac* ). This opens the Audio View and brings up a list of all audio recordings.

When you view audio recordings as a list, Echo Desktop shows the audio recordings as a series of rows with named columns.


### AUDIO RECORDING COLUMNS

View List Column	Description
Audio Indicator 	Identifies which file, if any, is currently playing audio. If no file is playing, the icon does not appear.
View in Pages button 	View pages linked to an audio recording. You may have audio recordings that do not have this icon because they are paperless sessions.
Audio Name	By default, this name is the audio recording's creation date and time.
Duration	The length of the audio recording
Last Modified	The timestamp when audio is recorded
Size	The size of the audio file in MB or KB
Source	Shows the name of the smartpen that recorded the audio recording, or <b>Desktop Only</b> . <b>Desktop Only</b> indicates that the source smartpen is removed from Echo Desktop, but its content is preserved in Echo Desktop.

### PLAYING AUDIO RECORDINGS IN AUDIO VIEW

With Echo Desktop, you can play audio while viewing the audio recording's pages, or you can play the audio by itself in the Audio View.

1. Go to Audio View.
2. Double-click the audio recording in the list.

The left-most column shows the audio playing  icon when the audio recording begins to play.

## PAGE TURNING

If you play back an audio recording that spans multiple pages, Echo Desktop automatically moves to successive pages in real time synchronization with the playing audio. This automatic paging continues until you manually switch pages using Paging Controls. From then on, the paging is under manual control only until you play back another audio recording.

If you added notes while playing back an audio recording, Echo Desktop shows this ink as green, by default. You can click on this ink to play back the audio at the point where you added the notes.





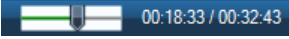



You can change the default color for clickable ink in the preferences panel.

## USING AUDIO CONTROLS


Echo Desktop shows Audio Controls at the bottom of its screen. You can use these controls to start, pause, stop, and control audio playback. Echo Desktop disables these controls unless you select the audio recording.



This toolbar has the following buttons and controls:

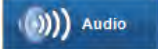
	Begin playing audio
	Pause audio
	Jump back (in 10 second increments)
	Jump forward (in 10 second increments)
	The audio position bar indicates the relative position of the currently playing audio, within the context of the entire audio file. This control also shows the current elapsed time position of the audio and the total length of the audio file. You can also use this control to reposition the audio playback. As you listen to an audio recording and view its pages, you can move the slider to move forward or backward in the audio recording. The state of the corresponding ink animation will shift in sync with the <b>me</b> .
	Jump to previous bookmark
	Jump to next bookmark
	Playback speed control: Increases or decreases the speed of the playing audio.

## SCRUBBING AN AUDIO RECORDING

Single-Page View, while you listen to an audio recording and view its pages, move the audio timeline slider  to reposition the audio playback. When you move the slider and audio is playing, the audio and its active ink move to the corresponding timeline position. This process is scrubbing the audio. You can use this feature to move forward or backward to a specific area of your audio recording and see how it corresponds to your written notes.

## RENAMING AN AUDIO RECORDING IN ECHO DESKTOP

By default, your smartpen names each audio recording using its creation date and time. For example, Echo Desktop would name an audio recording recorded on November 1, 2014 at 12:56 in the afternoon as 11.01.2014 12:56p. In Audio View, you can rename your audio recordings.

1. Click the **Audio View** button , or choose **Navigation > Audio** from the Menu.

This opens the Audio View and brings up a list of all audio recordings.

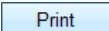
2. Click the audio recording you want to rename.
3. Choose **Edit > Rename** from the Menu.
4. Type a new name and click **OK**.

## PRINTING

With Echo Desktop, you can print notes transferred from your smartpen. You can also print your own Livescribe Dot Paper notepads.

### PRINTING A SINGLE PAGE

You can print pages from your Livescribe Dot Paper. Although clickable ink appears as green in the Central Viewing Pane, Echo Desktop prints it in black, just like regular ink. Your printed page does not interact with your smartpen.

1. View a page as a single page, or view all pages as thumbnails.
2. Select one or more pages.
3. In the Menu, choose **File > Print**. On the print dialog, choose a printer and click the Print  button.

By default, the page prints showing the page background. To print the page without the background, uncheck the **Print Page Background** checkbox. If you choose to include the background, the printed pages include anything shown on the pages of the actual notebook. For example, an image from a college-ruled notebook contains ruled lines.

### PRINTING YOUR OWN NOTEPADS

Using Echo Desktop, you can print your own notepads using a qualified color laser printer that can print 600 dpi or greater.

### TESTING YOUR PRINTER

1. Click the **Pages View** button  in the Main Toolbar to go to Pages View.
2. Select a notebook on the left to activate the **Tools** menu option and choose **Tools > Printable Notepads > Test Page (1 page)**.

Echo Desktop shows the **Print** dialog and automatically selects the first qualified printer you have in your printer list.

3. Click **Print**.
4. When the test page is finished printing, follow the instructions printed on the page using your smartpen. The instructions ask you to write some words in each of four areas and then dock your smartpen to your computer.
5. Next, in Echo Desktop, examine the test page after it has transferred from your smartpen. If all of your words transfer successfully, then your printer can print Livescribe Dot paper and you can begin printing your own notepads.

## PRINTING A NOTEPAD

1. Choose **Tools > Printable Notepads** and select a notepad to print such as **Notepad 1 (25 pages)**.
2. In the Print dialog, specify a range of pages to print or accept the default. Click **Print**.

Echo Desktop prints a notepad. You can use the notepad just like any other Livescribe Dot paper. When you dock your smartpen after writing on this notepad, your content transfers like it does with pre-printed Livescribe note-books and journals.



## ORGANIZING NOTES AND AUDIO

With Echo Desktop, you can organize notes and audio transferred from your smartpen.

### CREATING A CUSTOM NOTEBOOK

You can create Custom Notebooks in Echo Desktop to organize and better manage your pages.

You can add pages from any notebook, and drag them to arrange them in any order within a Custom Notebook. Pages in a Custom Notebook work like other notebook pages. For example, you can view, zoom, search, and print pages.

**Note:** A Custom Notebook is similar to a music playlist, or a digital photo album, but instead of pointing to songs or pictures, it points (links) to pages in their source notebooks.

1. Choose **File > Custom Notebooks > Create**.
2. In the Notebook Name dialog, enter a name for your custom notebook and click **OK**.

Echo Desktop creates an empty custom notebook and places it in the Navigation pane under the heading **Custom Notebooks**.

3. To add pages to a custom notebook, select one or more pages in Page View and drag and drop them onto the custom notebook in the Navigation pane.

**Note:** Livescribe PDFs and their pages cannot be organized into Custom Notebooks.

### ADDING CUSTOM NOTEBOOK PAGES

You can add pages to a Custom Notebook in either of the following ways.

- Drag and drop a page onto an existing Custom Notebook.
- Select **File > Custom Notebooks > Add pages to**.

### REORGANIZING CUSTOM NOTEBOOK PAGES

You can drag the pages of a custom notebook to reorder them.

## DELETING A CUSTOM NOTEBOOK

You can delete an entire Custom Notebook or pages from a Custom Notebook. Doing so does not affect the source notebooks or their pages. Delete Custom Notebooks or their pages in one of the following ways.

- Select a Custom Notebook in your notebook library. Then select **File > Delete Notebook**.
- Open a Custom Notebook in Pages View and select one or more pages. Then select **File > Delete Pages**.

## SHARING YOUR NOTES AND AUDIO

You can share notes and audio with other people, even those who do not have a Livescribe smartpen or Echo Desktop. To share, you export Notes and Audio, Pages Only, or Audio Only, and send the resulting file to another person.

### LIVESCRIBE PDF

Pencasts (notes and audio together) are always shared as Livescribe PDFs. Since Livescribe PDFs are standard PDFs with useful technical information added, you can generate a single file that contains: **Pages Only**, **Audio Only**, or **Notes and Audio** together.

Anyone can play a Livescribe PDF on a computer by opening it in Echo Desktop, or in our web-based Player in the latest versions of Internet Explorer, Chrome, or Safari. Pencasts can also be played on an Apple mobile device by downloading the free Livescribe+ app from the App Store.

### TO OPEN A LIVESCRIBE PDF IN ECHO DESKTOP

1. In the **File** menu, choose **Open**, then browse to the Livescribe PDF you want to open.
2. Browse to the Livescribe PDF you want to open. Livescribe PDFs use the standard .pdf extension.

### TO OPEN A LIVESCRIBE PDF IN THE WEB-BASED PLAYER

1. In your web browser, go to [www.livescribe.com/player](http://www.livescribe.com/player) .
2. Locate the Livescribe PDF on your computer's file system and drag it into your web browser, dropping it on the box where you see the words: "Download your Livescribe PDF, then drop it here."  
Alternatively, you can also click the **Choose Your Livescribe PDF** button to navigate to the folder on your computer's file system that contains the Livescribe PDF you wish to play.

### TO OPEN A LIVESCRIBE PDF IN LIVESCRIBE+

1. Tap and hold on the Livescribe PDF.
2. Select Livescribe+ to play the file.

## ECHO DESKTOP AND OLDER SHARING FORMATS

Installing Echo Desktop replaces any Livescribe Desktop software that may be installed on your computer. Existing notes and audio from Livescribe Desktop will be preserved, and you can access them from Echo Desktop.

Files in the .pencast format can be *imported* into Echo Desktop as described below.

## HOW TO SHARE NOTES AND AUDIO

For sharing, you have two options. You can send your Echo notes/audio as a Livescribe PDF to your computer's file system, and then share it as you would any other file. Or you can launch your default email program from within Echo Desktop, with the Livescribe PDF automatically attached.

Access the sharing menu as follows.

- ( **Win** ) Right-click on your selection. Then select **FSend X to...** menu.
  - ( **Mac** ) Click the **Share** button, or Click the **File** menu.
1. Select what you want to share.
  2. From the sharing menu, choose to send your selection to your **Computer**, or to **Email** it.
  3. From the Sharing Options window, choose to share your selection as **Notes and Audio** (a pencast), **Pages Only**, or **Audio Only**.
  4. Any selection you make can be sent as a Livescribe PDF. On Windows, you can send pages as PNGs (Each selected page becomes a separate PNG). Audio can be shared as an M4A file on Windows and Mac.
  5. ( **Win** ) Click **Continue**, which opens the Name Your File dialog or launches your default email program.  
( **Mac** ) Share your selection as an **Export** to your computer or as an **Email** attachment.

## IMPORTING LIVESCRIBE PDFS

You can open Livescribe PDFs that other people send you.

1. Save the Livescribe PDF to your computer's file system.
2. In Echo Desktop select **File > Open**.
3. In the Select Livescribe PDF dialog, navigate to the folder containing the Livescribe PDF you wish to import.
4. Select it and click **Open**.

# MANAGING STORAGE FOR ECHO DESKTOP AND YOUR SMARTPEN

With Echo Desktop, you can manage its storage of notes and audio, and the storage on your smartpen.

## FREEING SPACE ON YOUR SMARTPEN

Your smartpen uses flash storage to store your notes and audio. Recorded audio requires the most space. If you are running out of space on your smartpen, then can delete these audio recordings. There are several ways to free space on your smartpen:

- Select and remove one or more audio recordings using Echo Desktop.
- Archive any Livescribe notebook or other paper product you are no longer using.
- Use the Main Menu on your smartpen to select and delete audio recordings.

Use the Memory Bar to view the storage usage of your smartpen. The Memory Bar is located at the bottom of the Applications Manager.



This bar shows:

- Total storage capacity of your smartpen (both used and free)
- Storage used by system software (shown in green)
- Storage used by apps (shown in orange)
- Storage used by content you created (shown in purple)
- Available storage (shown in gray)

## REMOVING AUDIO FROM YOUR SMARTPEN

You can remove audio from your smartpen with Echo Desktop.

Removing audio from your smartpen frees storage. Because the audio is gone, any notes linked to the audio does not interact with your smartpen. That is, if you tap on notes that were linked to the audio, the audio no longer plays back.

1. Click the **Audio** button.

This opens the Audio View and brings up a list of all audio recordings.

2. Single-click or multi-select the audio recordings you want to delete.

3. Choose **File > Remove Audio from Smartpen**.
4. To confirm the removal, click **OK**, otherwise click **Cancel**.

To remove all audio from your smartpen for a specific Livescribe Dot Paper product, use the Archive feature.

You can also delete an audio recording from Echo Desktop.

## DELETING AUDIO FROM ECHO DESKTOP

You can delete audio recordings from Echo Desktop. Deleting audio from Echo Desktop *does not affect your smartpen*:

1. Click the **Audio** button.  
This opens the Audio View and brings up a list of all audio.
2. Single-click or multi-select the audio recording you wish to delete.
3. Choose **File > Delete Audio from Echo Desktop**.
4. To confirm the deletion, click **OK**, otherwise click **Cancel**.

You can also remove audio recordings from your smartpen.

## REMOVING A SMARTPEN FROM ECHO DESKTOP

You can remove your entire smartpen and its contents from Echo Desktop. Echo Desktop does not recognize your smartpen after this operation.

**Note:** Removing a smartpen from Echo Desktop does not affect the content of the smartpen.

1. Choose **Tools > Smartpen > Remove**.
2. At the prompt, choose to **Delete** or **Save**.

If you choose **Delete**, all notes and audio recordings from this smartpen are removed and are no longer available in Echo Desktop.

If you choose **Save**, all notes and audio recordings from the removed smartpen are saved in the as archived notebooks. You can also access the removed smartpen's audio from the Audio View.

3. In the dialog, **Confirm** or **Cancel** the smartpen removal.

If you previously archived notebooks that were on the removed smartpen, those archived notebooks are not removed from Echo Desktop.

## MAINTAINING SMARTPEN CONTENT ON MULTIPLE COMPUTERS

You can copy your smartpen content to any computer that has Echo Desktop.

If you choose to transfer content to multiple computers, be sure to dock the smartpen and transfer your data to each computer on a regular basis. Also, every time you delete data from Echo Desktop or archive a notebook, be sure to do the same operations on your other computers.

**Important:** You cannot dock the same smartpen to both Echo Desktop and Livescribe Desktop.

1. Dock the smartpen to the other computer. Echo Desktop presents a dialog asking if you want to copy your smartpen contents to this computer.
2. To copy the smartpen contents to this computer, click the **Connect and Transfer** button. Echo Desktop prompts you to name the smartpen (the first time only) and automatically copies the smartpen content to Echo Desktop. To charge the smartpen through the computer's USB port without copying your data, click the **Charge Only** button.

If you've registered your smartpen, Echo Desktop requires you to enter the email and password you used for registration before it will transfer content.

# ARCHIVING LIVESCRIBE NOTEBOOKS ONWINDOWS

When you have finished using a Livescribe notebook or other paper product, you should archive it in Echo Desktop.


## ARCHIVING LIVESCRIBE NOTEBOOKS

Archiving a Livescribe notebook does the following:

- Frees up storage space on your smartpen
- Enables you to use another Livescribe notebook that has the same dot pattern as the one you archived. Livescribe Dot Paper products with the same dot pattern have the same name.
- Moves your notes and audio for a Livescribe notebook or other paper product into an Archived Notebooks folder in the Library Pane of Echo Desktop. Your notes and audio remain interactive in Echo Desktop, just like non-archived Livescribe notebooks.
- Deletes your notes (ink data) and audio from your smartpen. Because of this, your smartpen no longer interacts with the physical Livescribe paper that you archived. That is, when you tap the notes in your archived physical notebook, they do not play back any audio.

**Important:** Do not archive a notebook unless you are finished using the physical notebook and are ready to set it aside. After you archive a notebook, do not go back to its physical notebook and start writing on it again, unless you have unused pages and want to treat them as a part of a new notebook. For example, you could archive a notebook that is partially completed, and then use the remaining pages as a second notebook.

If you are using multiple computers to manage your smartpen data, be sure to archive your notebooks on all of these computers.

1. Update your smartpen software to Version 1.2 or later. Prior versions do not support this feature. To update your software, choose **Help > Check for Updates** in the Menu.
2. Click the **Pages View** button  in the Main Toolbar to go to Pages View.
3. Click the **Library** tab of the Navigation Pane and click the notebook you want to archive.
4. Choose **File > Archive Notebook**.



5. When prompted, click **OK** to confirm the archive operation, otherwise click **Cancel**.
6. When prompted, click **Archive this notebook**, otherwise click **Cancel**.
7. Echo Desktop confirms your notebook is archived, and you see the archived notebook in your **Library** tab in an **Archived Notebooks** group.  
  
If you are using multiple computers, be sure to archive the notebook on each of them.

### DELETING ARCHIVED NOTEBOOKS FROM ECHO DESKTOP

1. Select an Archived Notebook in the Library tab.
2. Choose **File > Delete Notebook**
3. At the prompt, choose if you want to also delete the notebook's audio.
4. Click **Yes** to confirm the deletion.

Deleting archived content from Echo Desktop removes the content permanently. You cannot recover the archived content by docking your smartpen because the process of archiving the content removed it from your smartpen.

### DELETING ARCHIVED PAGES FROM ECHO DESKTOP

1. Open an Archived Notebook in Page View.
2. Select one or more page to be deleted.
3. Choose **File > Delete Page(s)**
4. At the prompt, choose if you want to also delete the page's audio.
5. At the prompt, click **Yes** to confirm the deletion.

Deleting archived content from Echo Desktop removes the content permanently. You cannot recover the archived content by docking your smartpen because the process of archiving the content removed it from your smartpen.

## MANAGING YOUR SMARTPEN

With Echo Desktop, you can manage properties of your smartpen, including registration, naming, and Paper Replay password.

### REGISTERING YOUR SMARTPEN

It is important that you register your smartpen. Registering your smartpen provides enhanced security for your smartpen data and gives you access to special promotional offers.

Follow the registration prompts when you dock your smartpen.

You can also manually start the registration process by clicking the Livescribe Online button on the Main Toolbar, or choose **Tools > Smartpen > Register**.

When creating your user name and password, follow these guidelines:

- Your user name is your email address. It cannot be more than 128 characters and is not case sensitive. For example, MyName@MyCompany.com and myname@mycompany.com are the same.
- Your password must be from 4 to 64 characters long. It is case sensitive and cannot start with a space. Your password and user name cannot be the same.

### RENAMING A SMARTPEN

You can rename a smartpen in Echo Desktop.

1. Launch Echo Desktop
2. Dock the smartpen to be renamed.
3. Choose **Tools > Smartpen > Rename**.
4. Type a new name and click **OK**.

### REMOVING A PAPER REPLAY PASSWORD

On your smartpen, you can create a password for your audio recordings. Setting a password can prevent others from listening to your recorded audio on your smartpen. When Paper Replay is protected, audio play back is prevented until the password is entered on your smartpen.

You can remove a Paper Replay Password from your smartpen using your smartpen's Main Menu, or using Echo Desktop.

To remove a password using Echo Desktop:

1. Launch Echo Desktop.
2. Dock your smartpen.
3. Choose **Tools > Smartpen > Clear Paper Replay Password**.
4. Confirm the password is cleared by playing back a Paper Replay audio recording on your smartpen. If the password is cleared, you can play back audio recordings without writing the password first.

Paper Replay Password does not prevent playback from Echo Desktop, only from your smartpen.

You cannot set your Paper Replay Password using Echo Desktop. You must set it from your smartpen's Main Menu.

## MANAGING SMARTPEN SOFTWARE AND APPS

You can install and update smartpen software using Echo Desktop.

### INSTALLING SMARTPEN SOFTWARE UPDATES

Livescribe periodically updates smartpen firmware, features, and Livescribe notebooks and other paper products.

When you launch Echo Desktop, it checks for available updates. You can also manually check for updates using Echo Desktop.

**Note:** If you try to use a new Livescribe paper product, and get an error message that it is “not supported”, you need to update your smartpen software.

1. Dock your smartpen.
2. Launch Echo Desktop.

Echo Desktop automatically checks for recent updates.

3. Accept the updates.

Echo Desktop downloads and installs them to your smartpen.

If you choose to postpone transferring updates to your smartpen, you can re-initiate the transfer process by undocking and re-docking your smartpen. Echo Desktop prompts you to transfer available items.

### CHECKING FOR UPDATES MANUALLY

By default, Echo Desktop automatically downloads and installs updates when you dock a smartpen. This feature is called Auto-Install.

You can disable the check for updates feature by changing the Smartpen user setting. At any time, you can manually check for updates to Echo Desktop and smartpen firmware:

1. Choose **Help > Check for Updates** in the Menu.
2. Accept the recommended updates.

---

# GLOSSARY

## 3-D Recording Headset

Earphones with embedded microphones that capture multi-directional, far-field audio and place objects in the sound landscape surrounding you.

## Archiving

The process of moving your notes and audio for a Livescribe notebook or other paper product into an Archived Notebooks folder in the Navigation Pane. This process also deletes your notes (ink data) and audio from the Livescribe smartpen. Because of this, the Livescribe smartpen no longer interacts with the physical Livescribe paper that you archived.

## Audio

Sound of any kind that is captured by the Livescribe smartpen microphone.

## Audio view

Audio presented as a list of files with details about each.

## Docking

Connecting a Livescribe smartpen to a personal computer by inserting the smartpen into its charging cradle (for Pulse smartpens) or Micro-USB cable (for Echo smartpens).

## Downloading

Receiving content from a remote location, such as the internet.

## Firmware

Software that manages the internal operations of a smartpen.

## Flash storage

Non-volatile storage of computer files, not dependent on electric charge. Sometimes referred to as memory.

## Ink

The markings of the Livescribe smartpen ballpoint on Livescribe notebooks and other Livescribe paper.

## Linking

Associating a Livescribe smartpen to an instance of Echo Desktop.

## Echo Desktop

Software that runs on your computer to view and listen to the content you capture using a smartpen. View your notes, listen to recorded audio, manage apps, and more.

## Livescribe+

The mobile app that plays Livescribe PDFs (on Apple Mobile devices). Watch the notes change color in sync with the playing audio.

## Livescribe Dot Paper

Plain paper printed with microdots that enable interactivity with Livescribe smartpens. The microdots enable Livescribe smartpens to recognize and respond to areas on a page, and link handwritten notes to recorded audio.

## Livescribe Echo and Pulse smartpens

Pen-based computers with advanced processing power, audio and visual feedback, and substantial storage. Smartpens digitally-capture written notes and can record audio using the Paper Replay smartpen app.

## Livescribe PDF

A PDF file containing your pencast that you can share with others. In Acrobat® Reader®, you can view the notes only. In Echo Desktop, the web-based Player, or the Livescribe+ mobile app, watch the notes change color in sync with the playing audio.

## Notes

Anything written or drawn on Livescribe Dot Paper with your smartpen.

## Pages View

A view in Echo Desktop that displays notebook pages. Notes are shown as active ink if they are linked audio.

## Paper Replay

An App that associates what you write on paper to audio you record.

---

## Paper Replay Password

Paper Replay Password sets a password for your Paper Replay sessions. Setting a password can prevent others from listening to your recorded audio on your smartpen.

## Pencast

A pencast is the combination of your notes with the associated audio. When you activate the notes by tapping (smartpen or Livescribe+) or clicking (Echo Desktop, Livescribe Player, ), you are "playing" a pencast. Pencasts can be shared with others as a Livescribe PDF.

## Playback Latency

When you tap your notes to play back audio, it plays from a moment five seconds before the note was actually written. This feature allows you to more accurately replay the audio because there is natural delay between the time when you hear an important point and the time when you begin writing notes.

## Preferences

Settings of Echo Desktop that conform to your way of working.

## Status

A shortcut for battery, version, date, and other information about the smartpen.

## Thumbnail View

A view in Echo Desktop that shows thumbnail representations of pages.

## Transfer

Copying notes and audio from a Livescribe smartpen to a computer using Echo Desktop.

## Updating

Installing a new version of software or firmware via Echo Desktop to your computer or smartpen.

## Uploading

Sending data to a remote location, such as the web.

## USB

Universal Serial Bus, a standard for wired connection between personal computers and peripheral devices like printers and the Livescribe smartpen.

**USB mobile charging cradle**

A cradle that charges and connects a Livescribe smartpen to your computer.