

GET THE MOST OUT OF YOUR PULSE™ SMARTPEN
VISIT US AT WWW.LIVESCRIBE.COM TO LEARN MORE

Create a personal account - 500MB of free space for you to store and share notes, create a profile, and share content with the community.

Pencast - Upload your notes and drawings to Livescribe Online, where they are automatically transformed into interactive Flash™ movies.

Download applications - Games, productivity, reference, translation, utilities and more.

Accessories - Purchase Livescribe dot paper products, ink refills, smartpen accessories, and more. The Pulse smartpen requires the use of Livescribe dot paper products and ink refills.

User Manuals - Find the Pulse smartpen and Livescribe Desktop User Manuals under the Livescribe Desktop Help menu.

Need more info? Check www.livescribe.com/support for more information.



LIVESCRIBE, PULSE, PAPER REPLAY, and NEVER MISS A WORD are trademarks or registered trademarks of Livescribe, Inc. All other brand and product names are trademarks of their respective owners. Copyright © 2007-2009 Livescribe, Inc. All rights reserved. Positioning pattern © 1999 Anoto AB.

This product or its use may be covered by the following United States Patent: 6,529,920, and other pending patent applications.



IMPORTANT
 Please read the End User License Agreement with this product before using the accompanying software program(s). You accept the terms of the End User License Agreement by using any part of the software. Using any non-authorized charging accessories or ink cartridges may damage your smartpen and voids your smartpen's warranty.

Software Download Available
 Livescribe® Desktop software, updates and new versions of the software are available at www.livescribe.com/support.

Agency Compliance Information
 Product, regulatory, and compliance information can be found in the Pulse User Manual located at www.livescribe.com/support.



www.livescribe.com

REV. G

PULSE™ SMARTPEN RECORDING

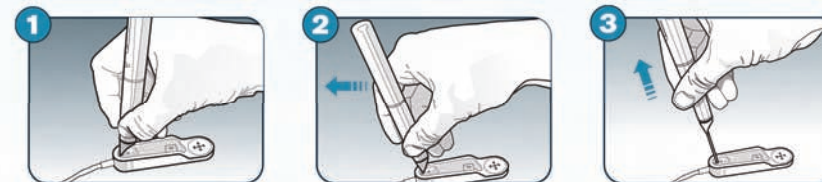
The built-in microphone on the Pulse smartpen is optimized for smaller recording environments, like a small classroom or a conference room.

The included 3-D Recording Headset features a microphone in each earbud that records in stereo and captures far-field audio, such as a teacher in front of a large classroom or a speaker on a stage.



Tip: If you don't want to look conspicuous while using the 3-D Recording Headset, place an earbud over each shoulder and aim the microphones toward your subject.

HOW TO REPLACE YOUR INK CARTRIDGE

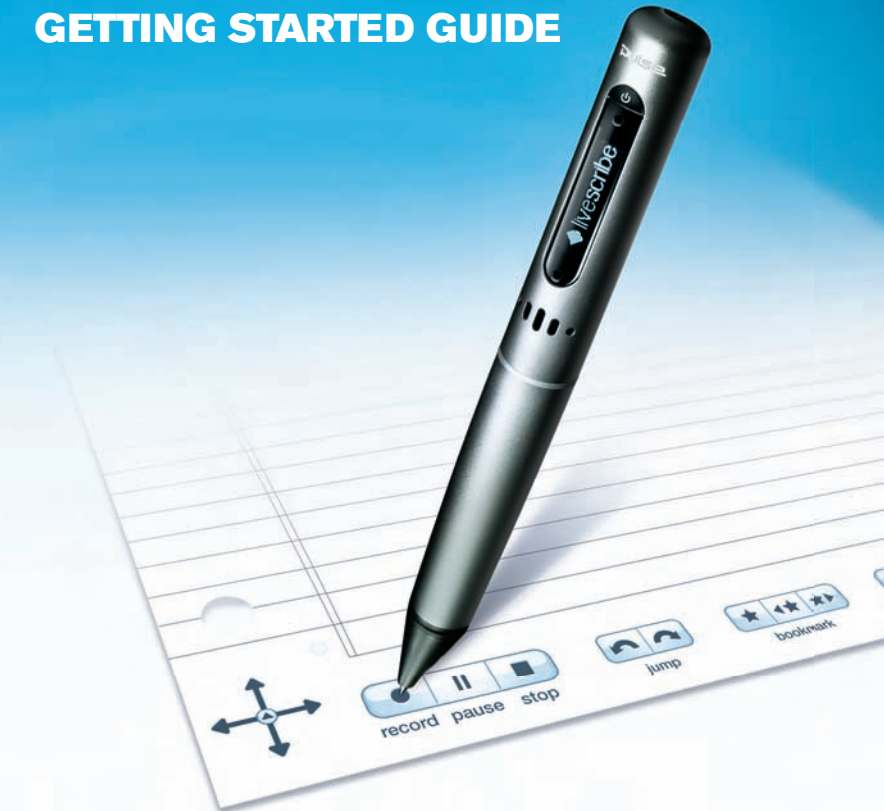


Insert the Pulse smartpen ink tip into the hole on top of the USB mobile charging cradle.

Tilt your Pulse smartpen gently forward until it stops.

Keep your Pulse smartpen tilted forward and slowly lift it up to pull out your ink cartridge.

GETTING STARTED GUIDE

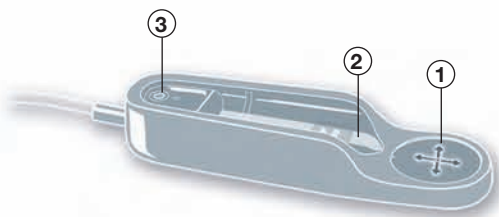
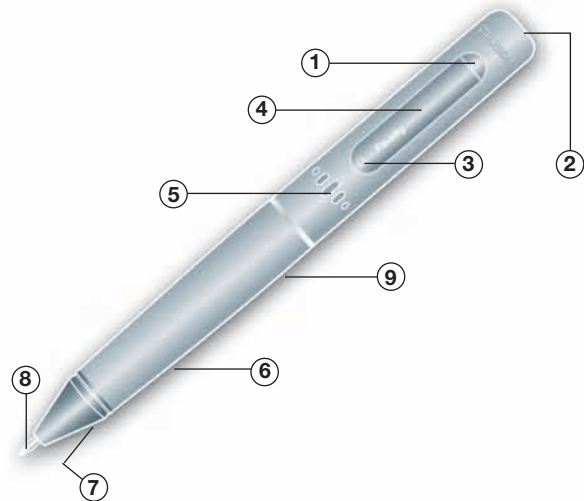


INTRODUCING THE PULSE™ SMARTPEN

This guide will get you up and scribing. If you need additional help, visit us at www.livescribe.com/support or call 1-877-SCRIBE-9.

Pulse Smartpen

1. Power button
2. Headset jack
3. Built-in microphone
4. Display
5. Speaker
6. USB connector
7. Infrared camera
8. Removable ink cartridge
9. Rechargeable battery



USB Mobile Charging Cradle

1. Nav Plus - navigation control
2. USB smartpen connector
3. Ink cartridge removal ring

- Tip:** To replace an ink cartridge:
- Insert the Pulse smartpen tip into the ink cartridge removal ring.
 - Tilt Pulse smartpen back and pull up to remove ink cartridge.

CONFIGURE YOUR PULSE™

1

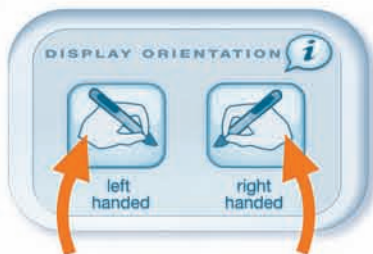
- 1 Turn on your Pulse smartpen by pressing the Power button. You may need to charge your smartpen by placing it in the USB charging cradle and connecting it to your computer. The computer must be turned on for your smartpen to charge.



- 2 Tap the **i** buttons in this guide with the tip of your smartpen to hear additional information.

Tip: The printed buttons in this guide really work!

- 3 Orient your display:
Tap the “left” or “right” button to orient your display for left- or right-handed use.



Left-handed users tap the left button. Right-handed users tap the right button.

- 4 Set the time and date:
 - Tap the “set date” button and use this printed keypad to enter the date. Example: Tapping 092809 sets the date to September 28, 2009.
 - Tap the “set time” button and use this printed keypad to enter the time. Example: Tapping 1201PM sets the time to 12:01PM.

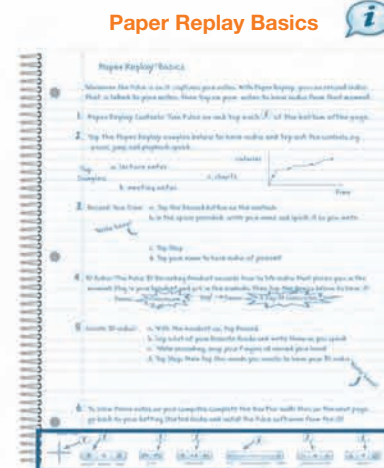


Tip: It is important to set the time and date on your Pulse smartpen because Paper Replay sessions are time-stamped with the date and time they are created.

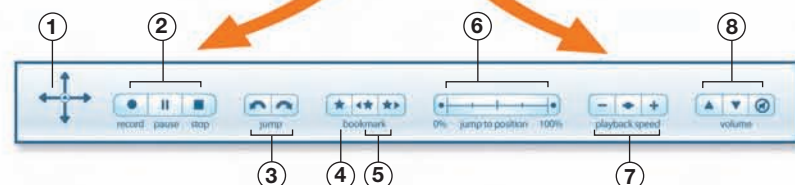
EXPERIENCE PAPER REPLAY™

2

- 5 Open your Starter notebook to the first page and go through the tutorial. When you are done, return to this guide.



Paper Replay Controls



1. Nav Plus - navigation control
2. Recording and Playback controls
3. Jump back/forward
4. Create new bookmark
5. Jump to previous/next bookmark
6. Position bar - jump to any point in the session
7. Playback speed
8. Volume controls

INSTALL LIVESCRIBE DESKTOP

3

IMPORTANT: Install Livescribe Desktop **BEFORE** connecting your USB cradle. If you need additional help, visit us at: www.livescribe.com/support or call 1-877-SCRIBE-9.

- 6 Download and install the Livescribe Desktop software from www.livescribe.com/install.

IMPORTANT: If you are using multiple computers to manage your Pulse smartpen and notebooks, be sure to dock your smartpen and transfer your data to each computer on a regular basis. Every time you archive a notebook, be sure to archive that notebook on your other computers.

- 7 Once Livescribe Desktop is installed, plug the USB mobile charging cradle into your computer's USB port.

- 8 Place your Pulse smartpen into the USB cradle. Your smartpen will begin charging. Out of the box, fully charging your smartpen may take up to 2.5 hours.



Tip: Tap this button to check your battery.

- 9 Register your Pulse smartpen when prompted.

IMPORTANT: Registration allows you to receive important software upgrades, download new applications, and share your notes through Livescribe Online.

- 10 Read the **User Manuals** for the Pulse smartpen and Livescribe Desktop. They can be found under the Livescribe Desktop Help menu.